

ĮVADAS

UNHCR MOKYMAI

Karolis Zibas

Integration Officer

UNHCR Representation for the Nordic and Baltic countries



UNHCR
The UN Refugee Agency

Nordic and Baltic Countries

TEMOS

- Trumpa konteksto apžvalga
- Integracijos ir įtraukties samprata
- Pabėgėlių integracijos politika ir specialistų vaidmuo bei atsakomybė
- Pabėgėlio gyvenimo ciklas priimančiojoje šalyje ir intervencijos
- Imigrantai ir pabėgėliai pažeidžiamumo kontekste
- Tarpkultūrinės įvairovės „ABC“
- Dalyvavimo metodai dirbant su pabėgėliais



INTERNALLY DISPLACED PERSONS



Those who have fled their homes because of natural or man-made disasters, violence, or persecution. They are displaced within their own country and have not crossed an internationally recognized country border.

REFUGEES



Those who have fled their country because of violence, conflict, or fear of persecution. They are unable or too afraid to seek protection from their country, or return there, for fear of discrimination.

MIGRANTS



Those who have left their homes to live or work elsewhere. Their reasons for leaving vary, and their migration may be voluntary or forced.

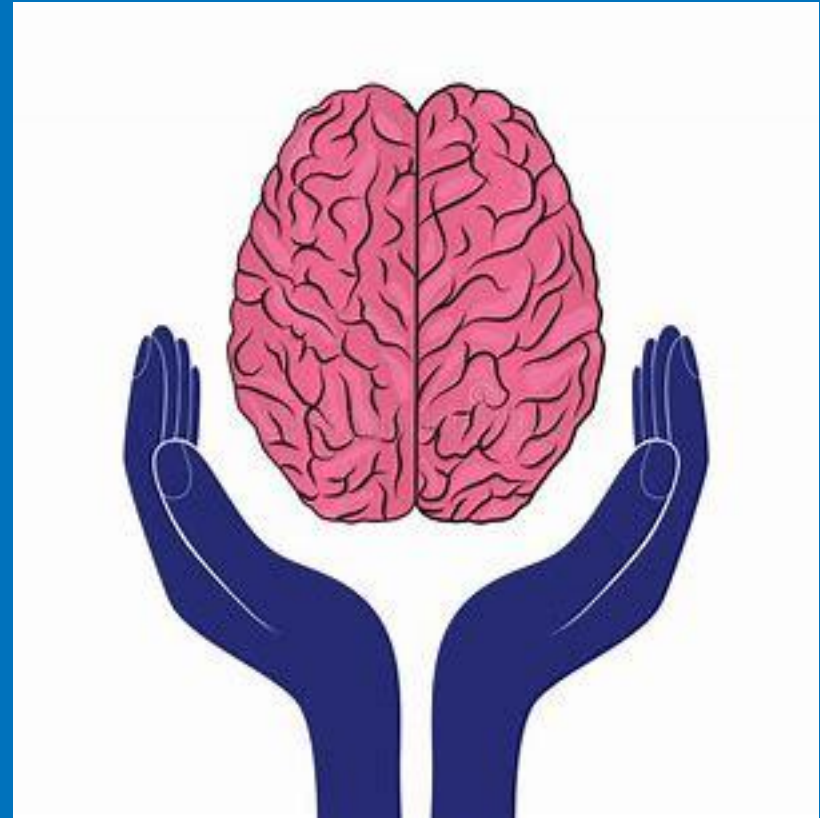
Source: UNHCR/International Organization for Migration. Icons by Gerald Wildmoser and Luis Prado, the Noun Project

Voluntarily and forced migration: differences and similarities

Please, think for few minutes in groups:

What is the share (%) of international migrants from the global population?

Share (%) of refugees from the global population?

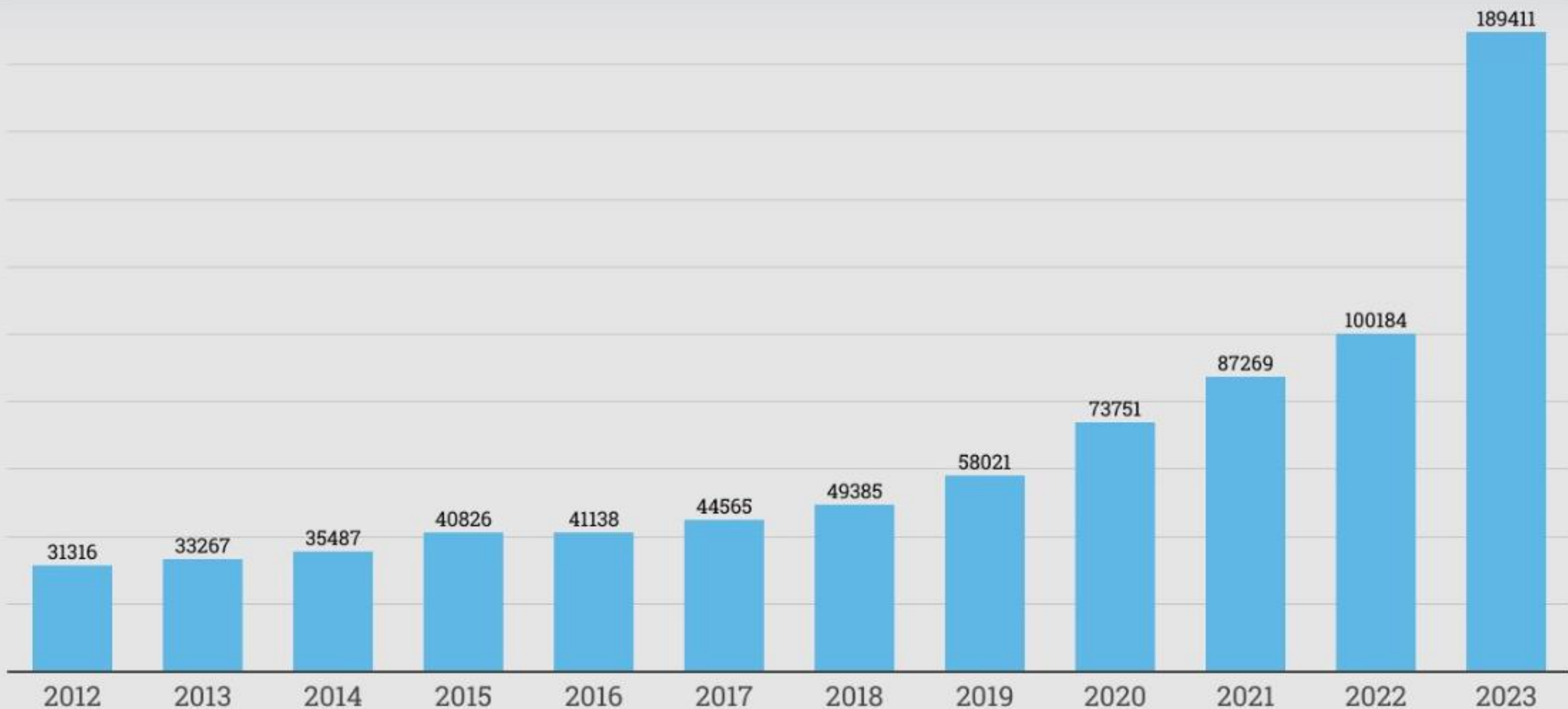


UNHCR
The UN Refugee Agency

Nordic and Baltic Countries



Figure 1. Number and Share of Global Migrants, 1960-2020



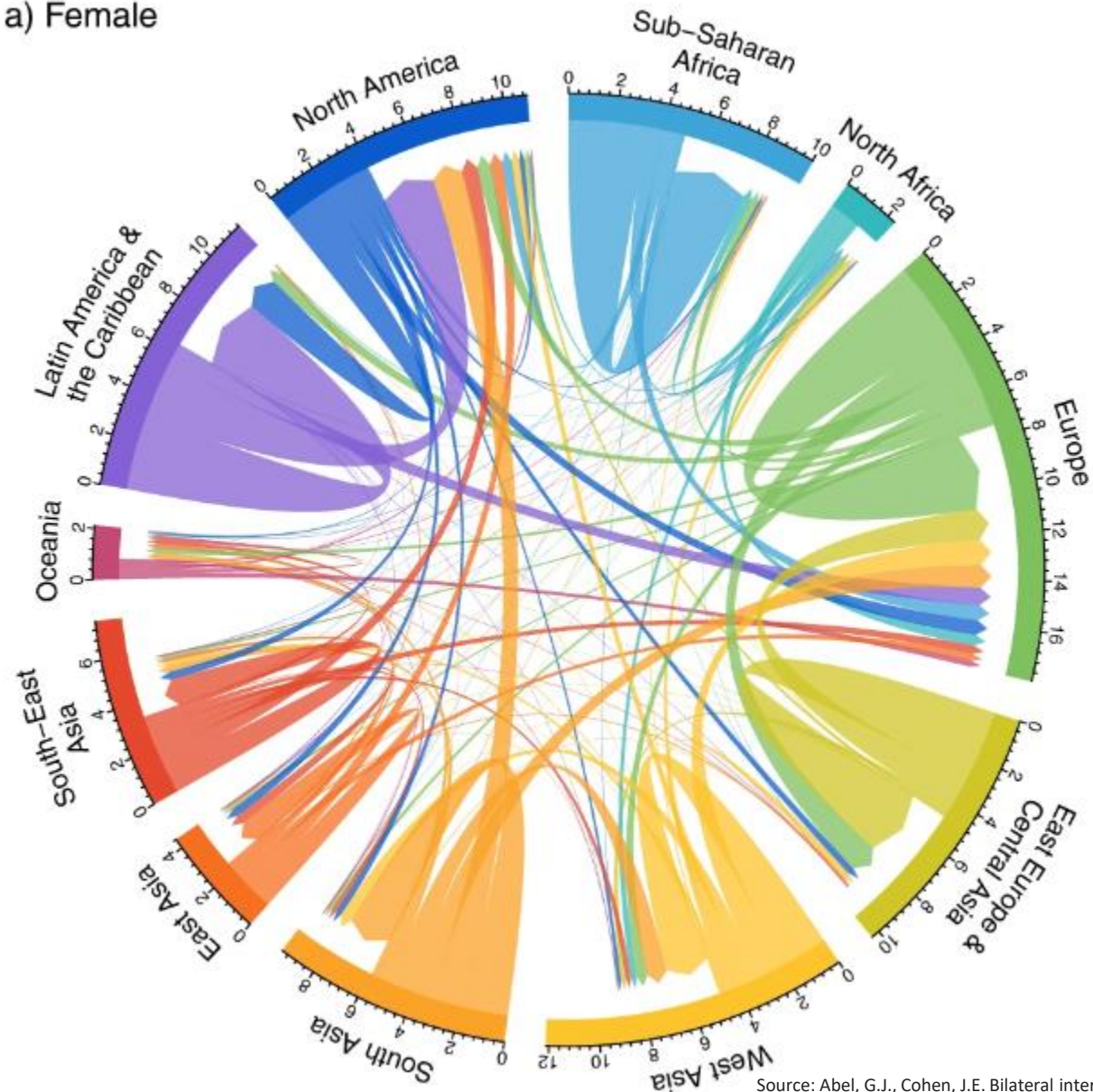
© Migracijos departamentas, 2023

MIGRACIJA.LT

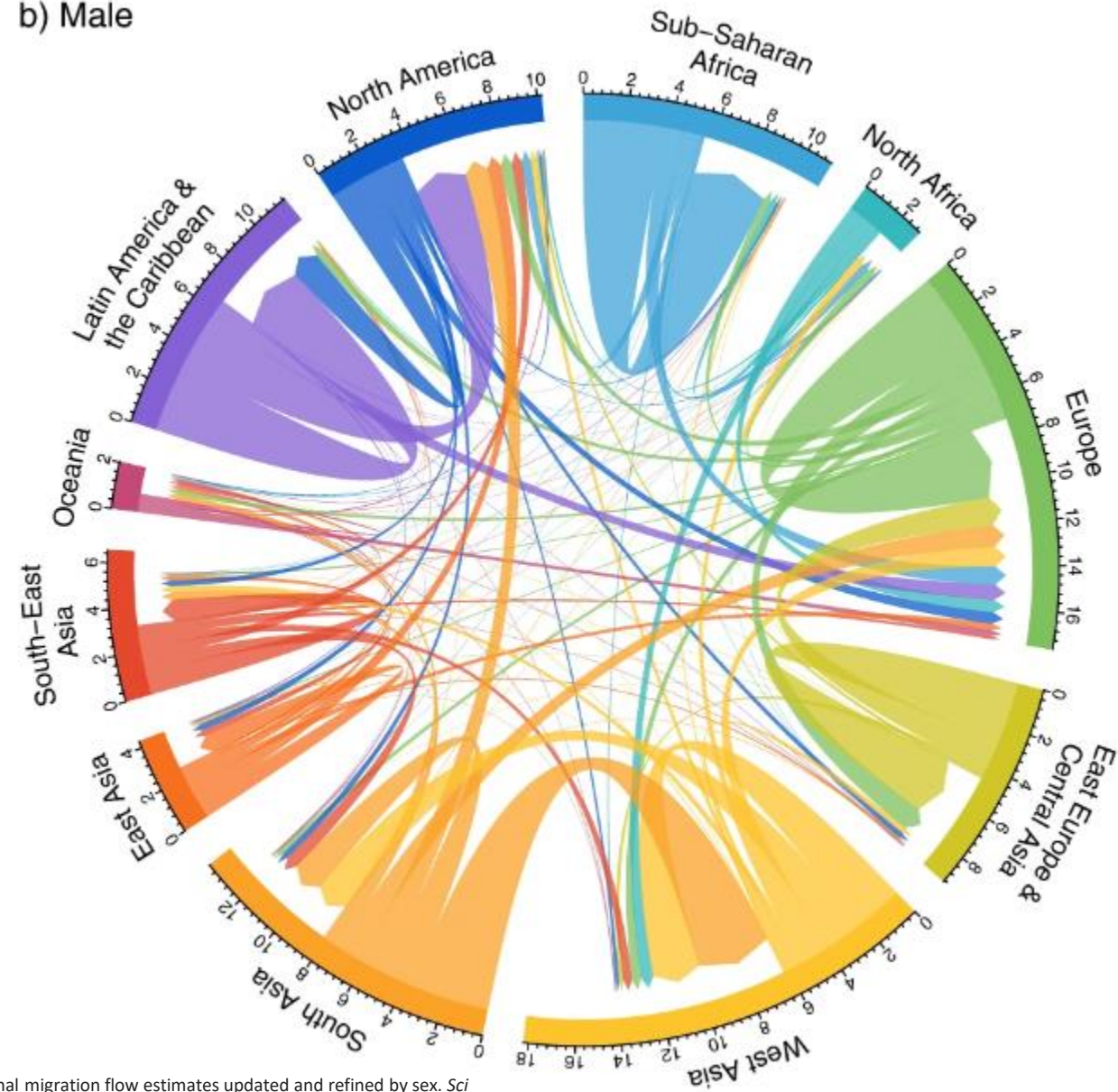
Population Division, *International Migrant Stock 2020: Destination*, Table 1: International Migrant Stock at Mid-Year by Sex and by Region, Country or Area of Destination, 1990-2020, available online. Data prior to 1990 are no longer available online.

International migration “picture” at a glance (2024)

a) Female



b) Male

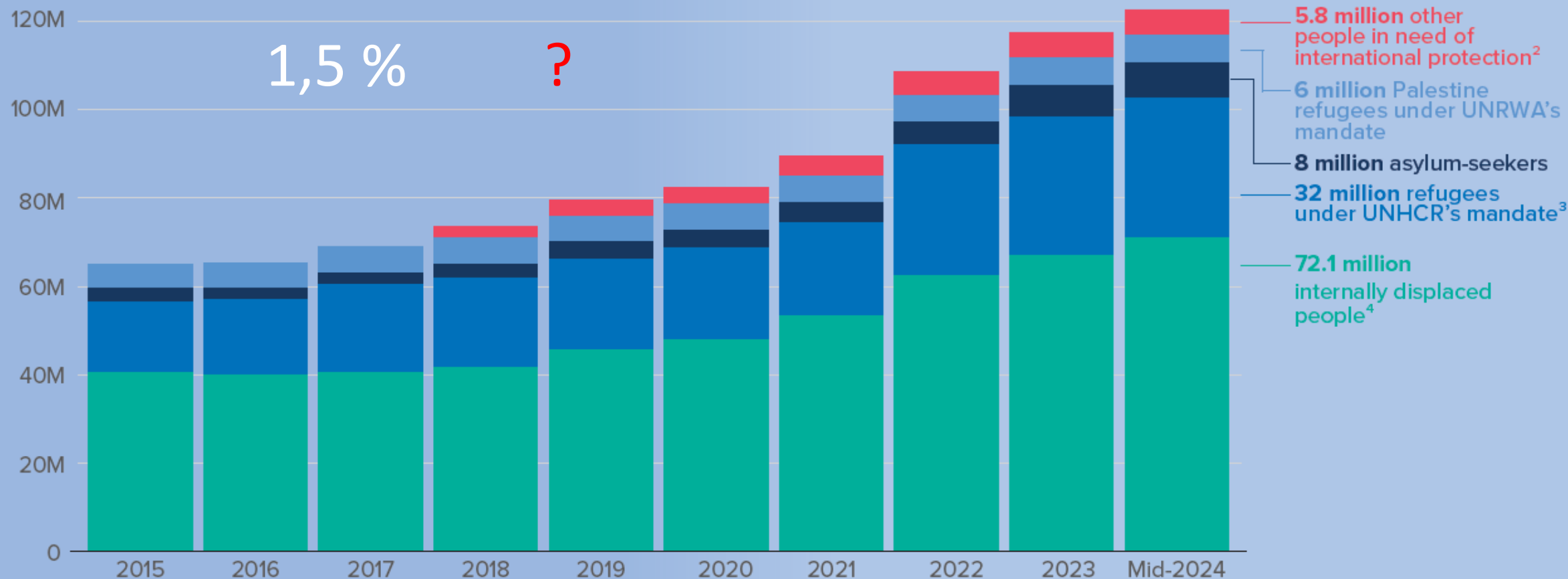


Source: Abel, G.J., Cohen, J.E. Bilateral international migration flow estimates updated and refined by sex. *Sci Data* 9, 173 (2022). <https://doi.org/10.1038/s41597-022-01271-z>

Displacement at a glance: UNHCR 2024 Mid-year report

122.6 MILLION FORCIBLY DISPLACED WORLDWIDE¹

At the end of June as a result of persecution, conflict, violence, human rights violations or events seriously disturbing public order.



UNHCR
The UN Refugee Agency

Nordic and Baltic Countries

LOW-AND MIDDLE-
INCOME COUNTRIES
HOSTED

71%

of the world's refugees and other people in need of international protection.⁵ The Least Developed Countries provided asylum to 22 per cent of the total.

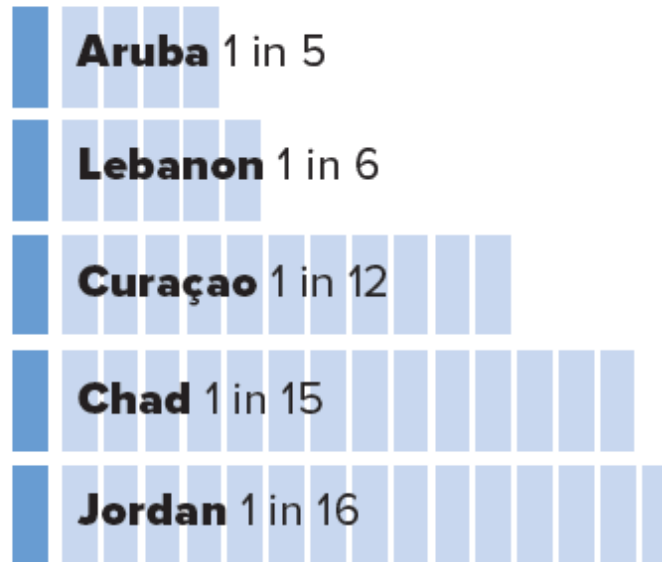
69%

LIVED IN NEIGHBOURING
COUNTRIES

69 per cent of refugees and other people in need of international protection lived in countries neighbouring their countries of origin.

1 IN 5
ARE DISPLACED

Relative to their national populations,⁶ the island of Aruba (1 in 5) and Lebanon (1 in 6) hosted the largest number of refugees and other people in need of international protection, followed by Curaçao (1 in 12), Chad (1 in 15) and Jordan (1 in 16).⁷



Displacement at a glance UNHCR 2024 Mid-year report



UNHCR
The UN Refugee Agency

Nordic and Baltic Countries

Displacement at a glance

UNHCR 2024 Mid-year report

SOLUTIONS

85,000
REFUGEES WERE
RESETTLED

85,000 refugees were resettled, according to government statistics.

2.2 MILLION
DISPLACED PEOPLE
RETURNED

2.2 million displaced people returned to their areas or countries of origin, including 1.8 million internally displaced people and 433,600 refugees.

26,400
OBTAINED THE
CITIZENSHIP

26,400 refugees obtained the citizenship of their country of asylum.

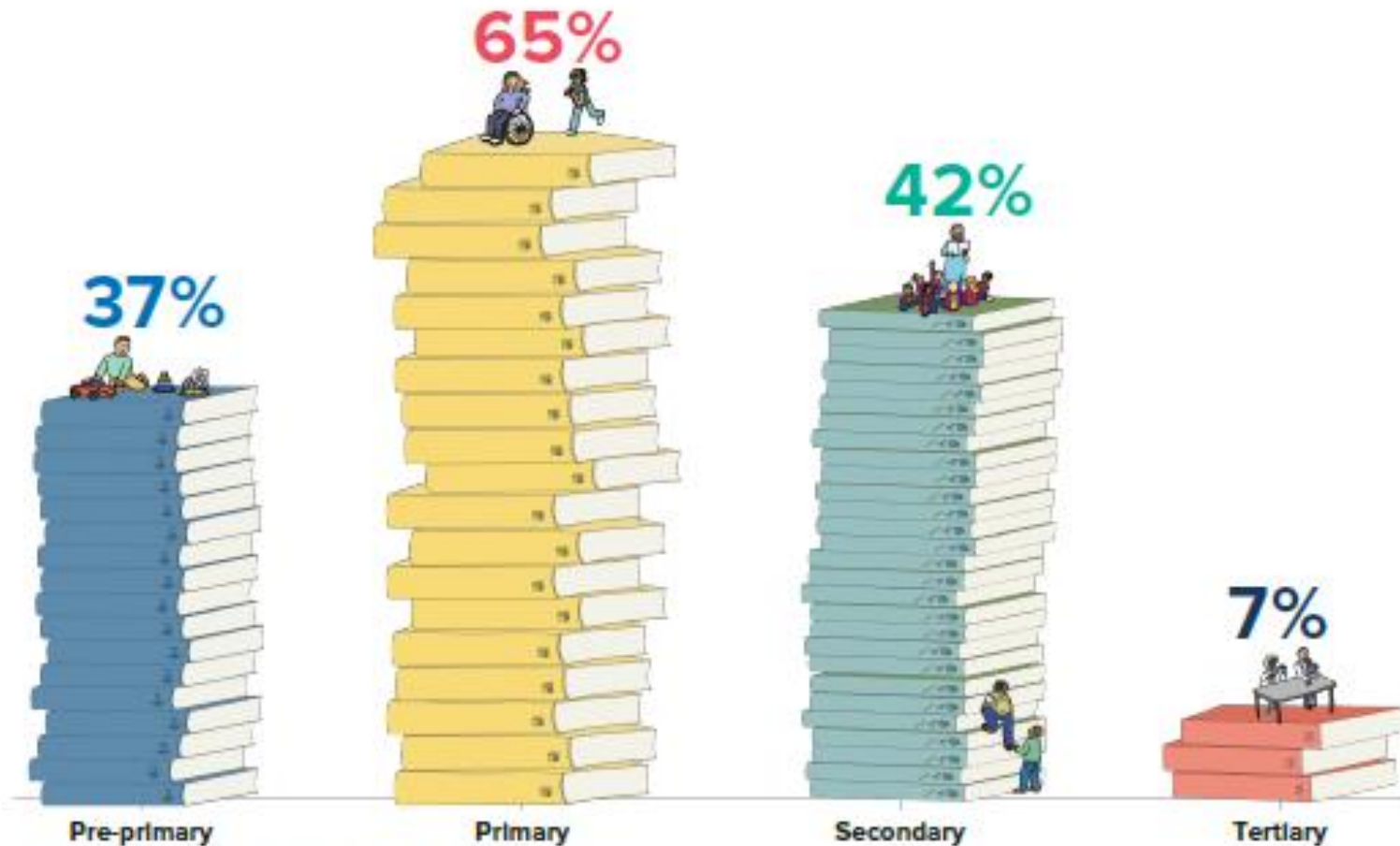


UNHCR
The UN Refugee Agency

Nordic and Baltic Countries

UNHCR's 2024 Education Report

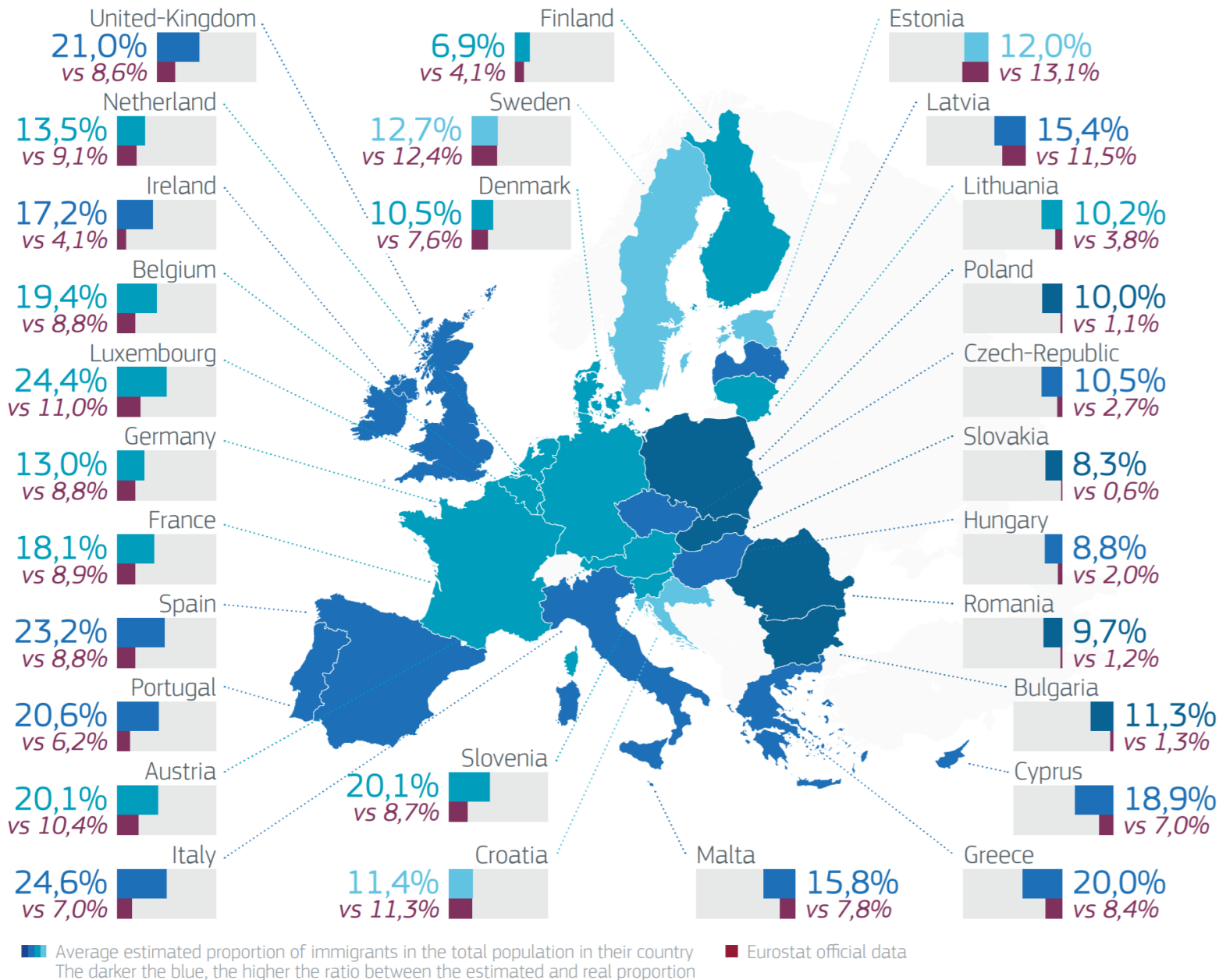
Figure 11 Refugee gross enrolment rates – Average, reporting countries



Source: Author's analysis using data from UNHCR operations

Different outcomes of different displacement and refugee situations

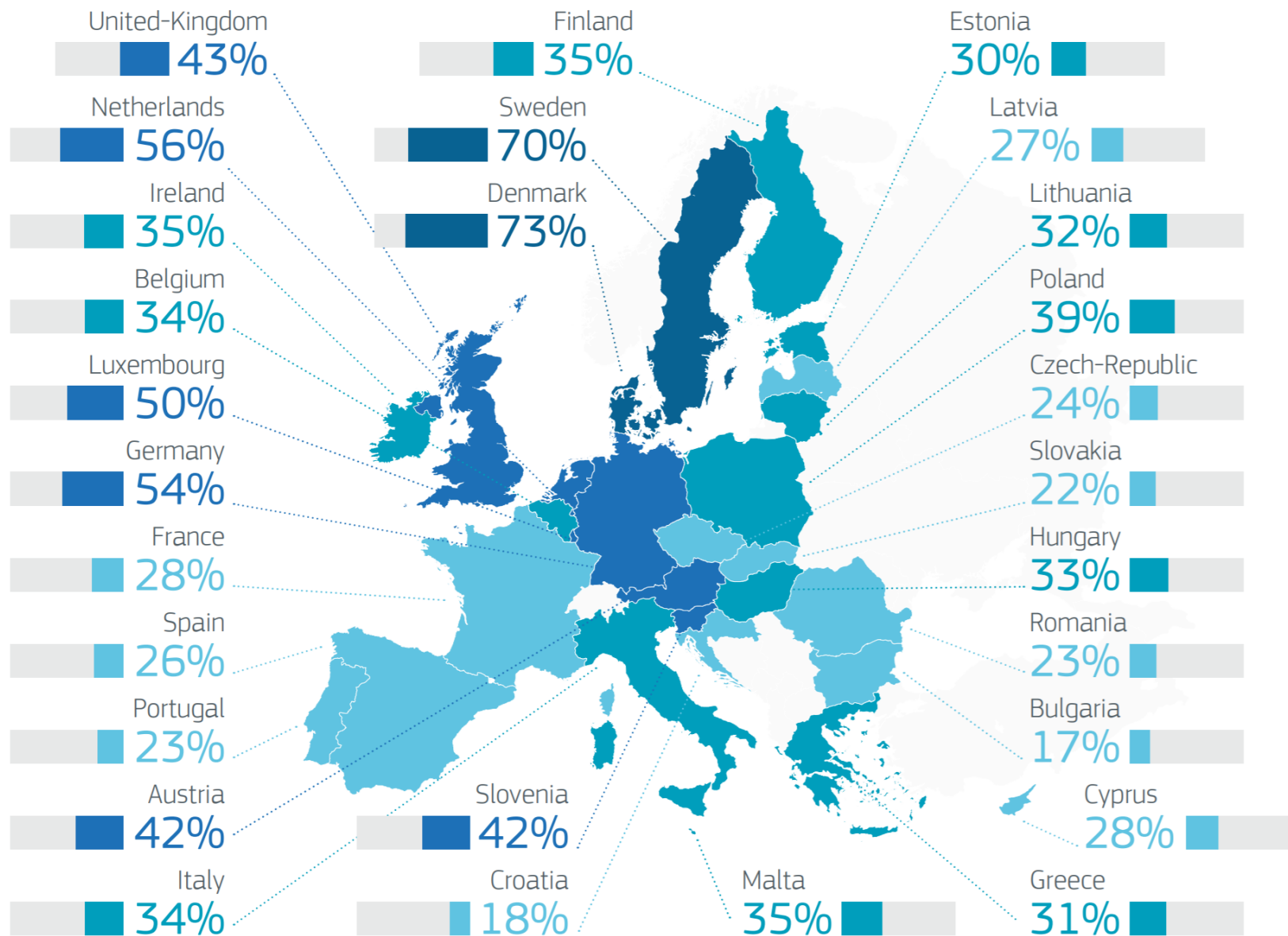
Overestimating migrant population



Actual VS perceived number of immigrants in the EU 28

Source: Eurobarometer, Special 469 "Integration of immigrants in the European Union"

Need of information!



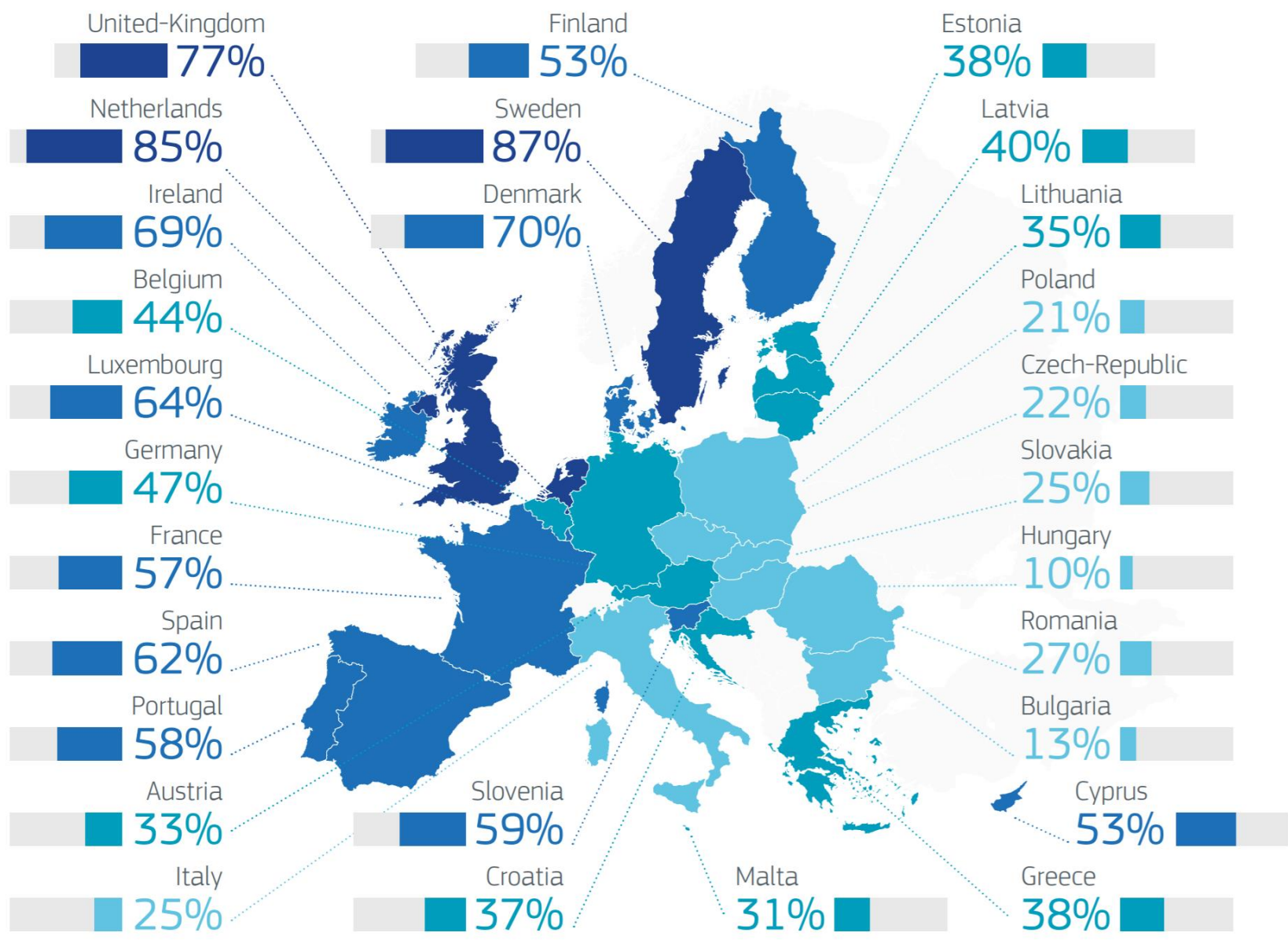
**Well informed
about migration
and integration
matters in the
EU 28**

Source: Eurobarometer, Special 469 "Integration of immigrants in the European Union"

Nordic and Baltic Countries

Social distance

% TOTALLY COMFORTABLE HAVING AN IMMIGRANT AS A FRIEND



Social distance between migrants and host society is different in EU 28

Larger migrant community, shorter social distance

Source: Eurobarometer, Special 469 "Integration of immigrants in the European Union"

Nordic and Baltic Countries

Migrant Integration Policy Index



Labor market mobility, Education, Political participation, Access to nationality, Family reunion, Health, Permanent residence, Anti-discrimination



LITHUANIA

2019

Rank: **Equality on paper**

MIPEX Score (with Health): **37**

LABOUR MARKET MOBILITY

FAMILY REUNION

EDUCATION

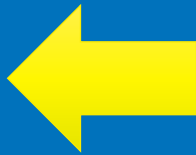
HEALTH

POLITICAL PARTICIPATION

PERMANENT RESIDENCE

ACCESS TO NATIONALITY

ANTI-DISCRIMINATION



LEGEND

- 80-100 - Favourable
- 60-79 - Slightly favourable
- 41-59 - Halfway favourable
- 21-40 - Slightly unfavourable
- 1-20 - Unfavourable
- 0 - Critically unfavourable

Sweden	Comprehensive (Top10)	86	↓ 1	Israel	Comprehensive	49	↓ 1
Finland	Comprehensive (Top10)	85	↑ 3	Denmark	Temporary	49	↓ 4
Portugal	Comprehensive (Top10)	81	↑ 3	Malta	Comprehensive	48	↑ 5
Canada	Comprehensive (Top10)	80	↑ 2	South Africa	Equality on paper	48	— 0
New Zealand	Comprehensive (Top10)	77	— 0	Slovenia	Equality on paper	48	↑ 3
USA	Comprehensive (Top10)	73	↓ 2	Ukraine	Temporary	48	↑ 2
Norway	Comprehensive	69	↓ 3	Japan	Integration denied	47	↑ 1
Belgium	Comprehensive (Top10)	69	— 0	Moldova	Equality on paper	47	↑ 8
Australia	Comprehensive (Top10)	65	↓ 4	Greece	Equality on paper	46	↑ 3
Brazil	Comprehensive (Top10)	64	↑ 12	Austria	Temporary	46	— 0
Luxembourg	Comprehensive	64	↑ 10	Hungary	Equality on paper	43	↑ 1
Ireland	Comprehensive (Top10)	64	↑ 5	Turkey	Comprehensive	43	↑ 17
Spain	Comprehensive	60	↑ 3	Albania	Equality on paper	43	↑ 1
Germany	Temporary	58	↑ 1	North Macedonia	Equality on paper	42	— 0
Argentina	Equality on paper	58	↓ 4	Cyprus	Integration denied	41	↑ 2
Italy	Temporary	58	↓ 1	Poland	Equality on paper	40	↓ 1
Netherlands	Temporary	57	— 0	Bulgaria	Equality on paper	40	↑ 3
Iceland	Comprehensive	56	↑ 7	Croatia	Equality on paper	39	↑ 1
France	Temporary	56	↑ 3	Slovakia	Equality on paper	39	↑ 2
United Kingdom	Temporary	56	↓ 1	Latvia	Equality on paper	37	↑ 3
Korea	Comprehensive	56	↓ 2	Lithuania	Equality on paper	37	↑ 4
Chile	Equality on paper	53	↑ 3	China	Integration denied	32	↑ 5
Mexico	Equality on paper	51	↓ 1	Russia	Integration denied	31	↑ 2
Switzerland	Temporary	50	— 0	United Arab Emirates	Integration denied	29	↑ 8
Serbia	Equality on paper	50	↑ 5	Indonesia	Integration denied	26	↑ 1
Czechia	Comprehensive	50	↑ 3	India	Integration denied	24	— 0
Estonia	Comprehensive	50	↑ 5	Jordan	Integration denied	21	↑ 2
Romania	Equality on paper	49	— 0	Saudi Arabia	Integration denied	10	↓ 1

Conclusions:

- Better integration policies →
- Better coordination and implementation →
- Better (political) communication →
- Bigger awareness →
- Better understanding (refugees VS migrants) →
- Acceptance (refugees and migrants) →
- More inclusive societies... (all way around)



WOULD YOU AGREE OR DISAGREE THAT LITHUANIA WOULD ACCEPT THE FOLLOWING GROUPS OF PEOPLE FROM NON-EU COUNTRIES? (2021, %)

DIVERSITY DEVELOPMENT GROUP



Non-EU nationals coming to study

Non-EU citizens coming to Lithuania to visit their family members

War refugees Christians

Belarusian citizens coming to Lithuania for special humanitarian reasons

Afghan citizens and their family members who assisted the Lithuanian Armed Forces

Climate refugees Christians

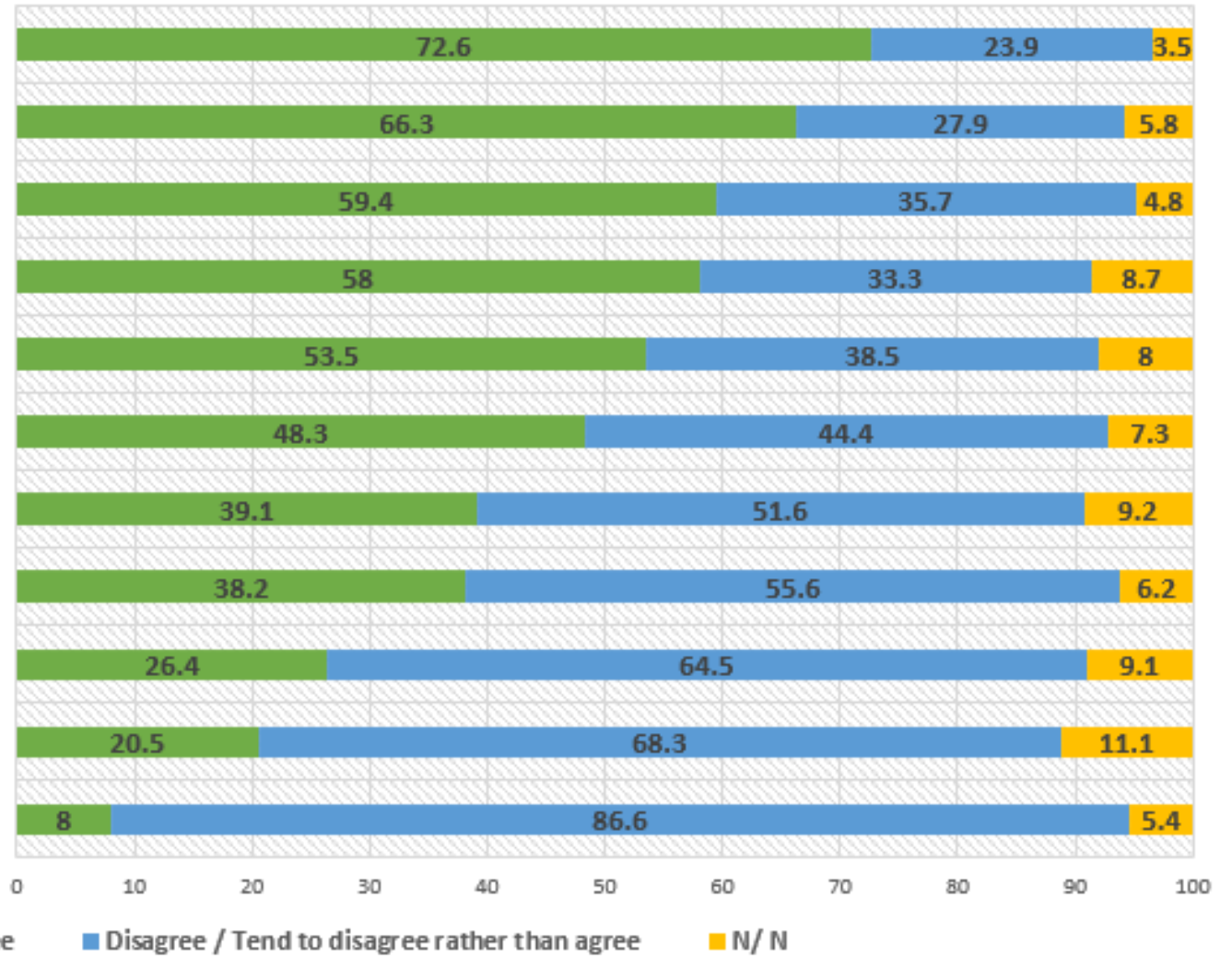
Political refugees

Labor migrants from non-EU countries

War refugees Muslims

Climate refugees Muslims

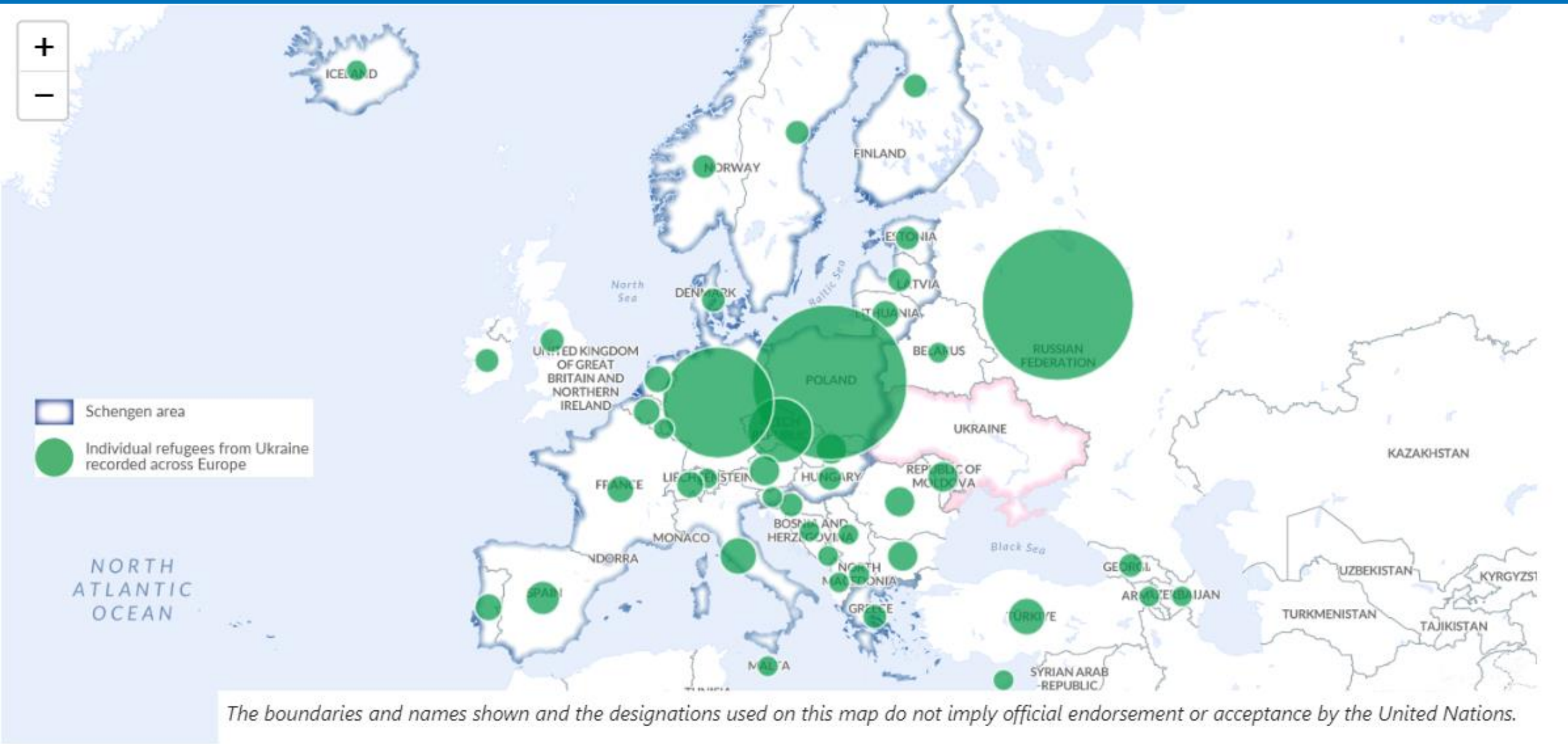
Non-EU citizens who have crossed the border of the Republic of Lithuania illegally



Integration as a two-way process? For whom?

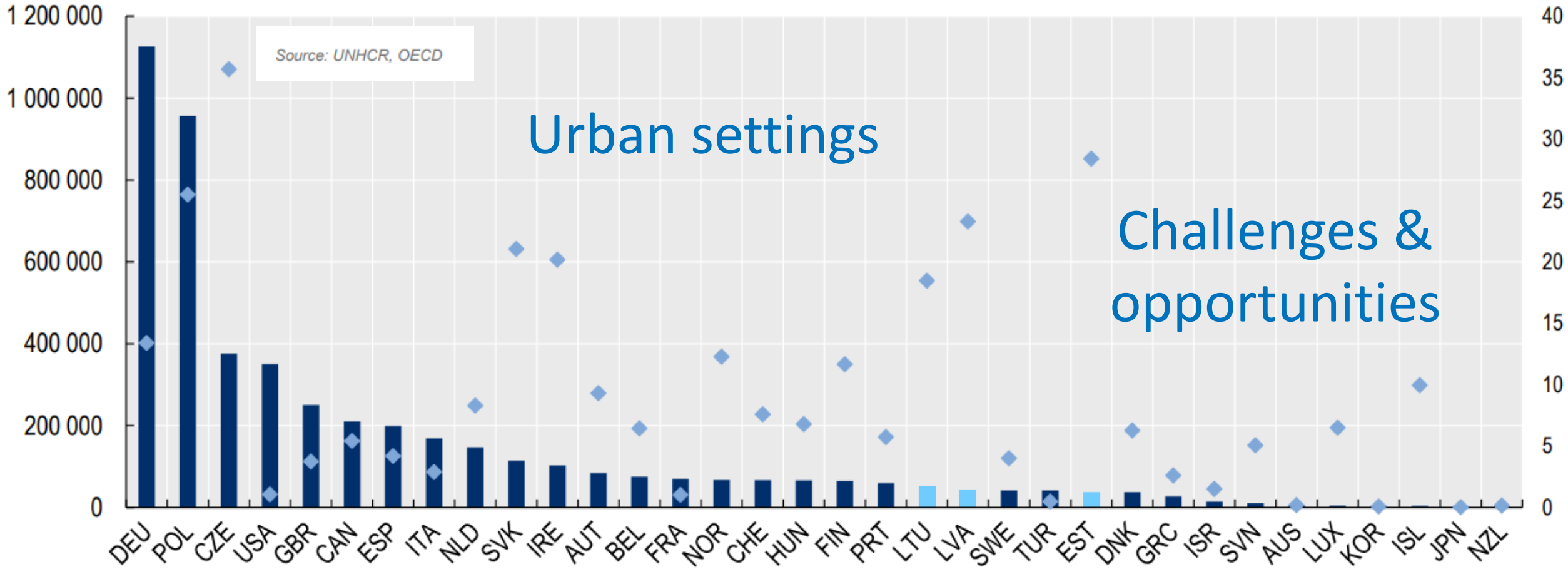


Ukraine: the situation of internally displaced persons & refugees

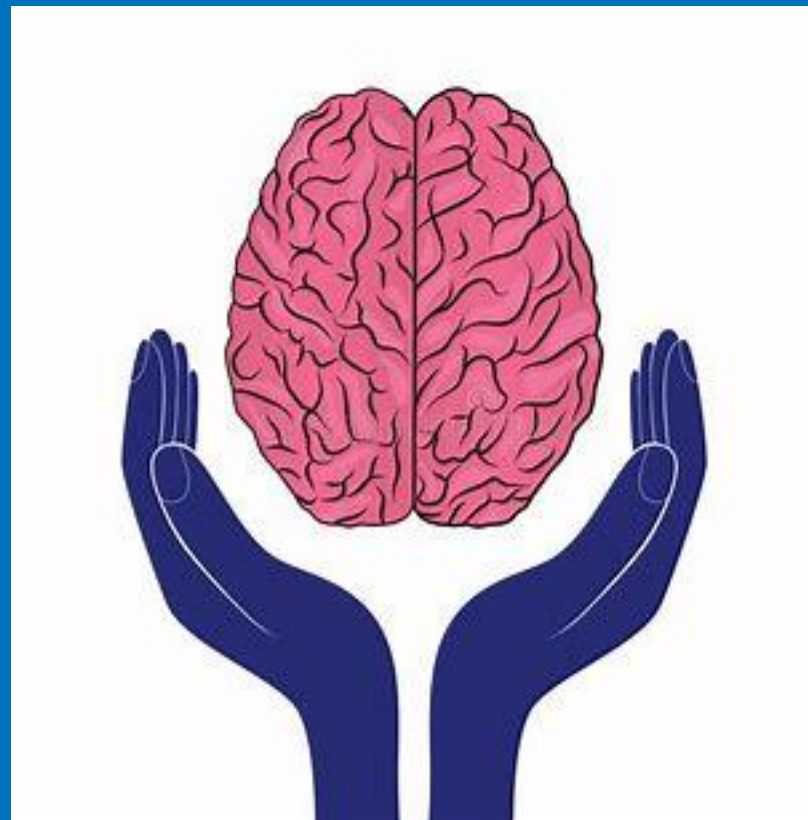


Number of refugees from Ukraine recorded in OECD countries, absolute numbers and per thousand of total population, January 2024

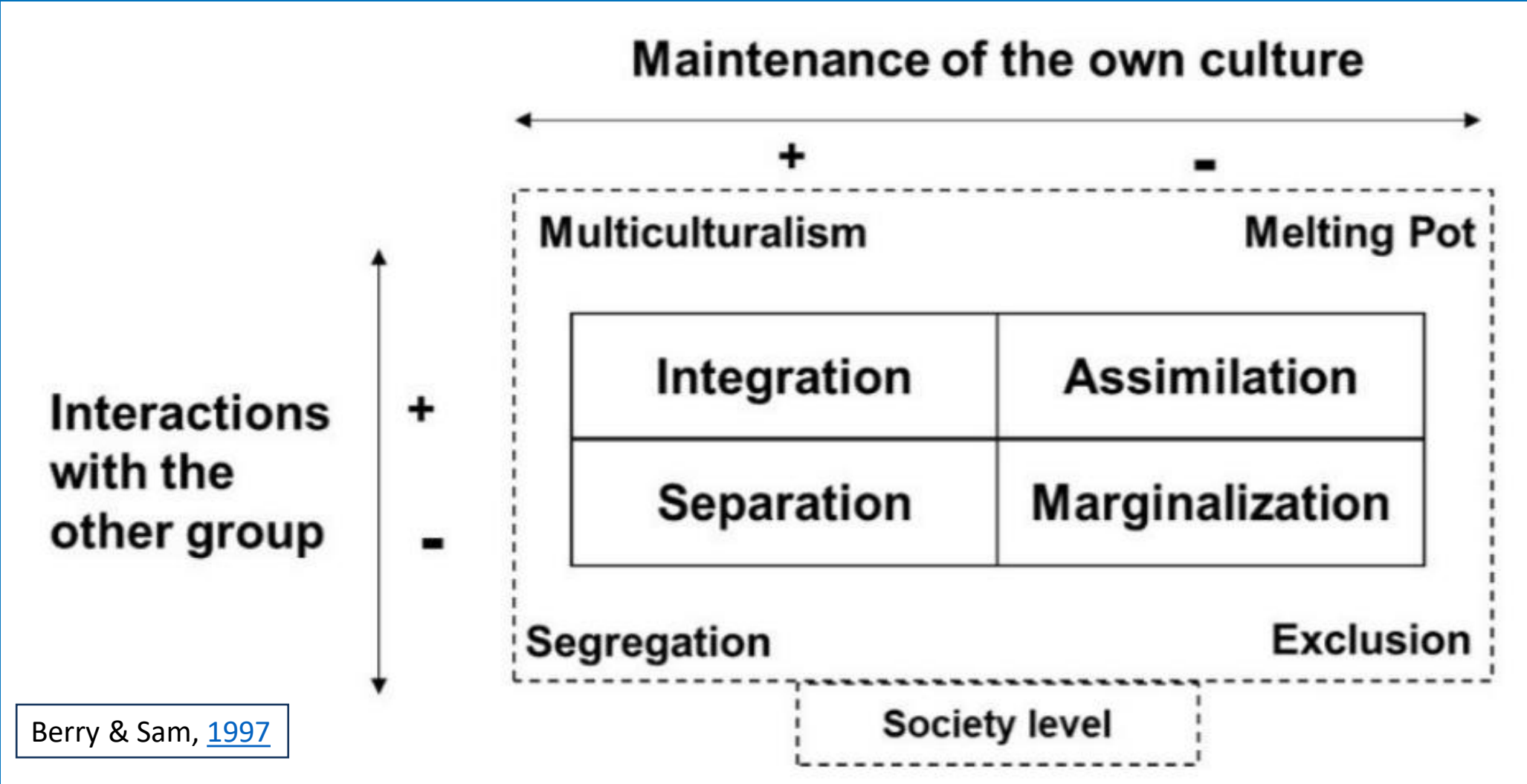
■ Total number of refugees from Ukraine ◆ Number of refugees from Ukraine per thousand inhabitants (right scale)

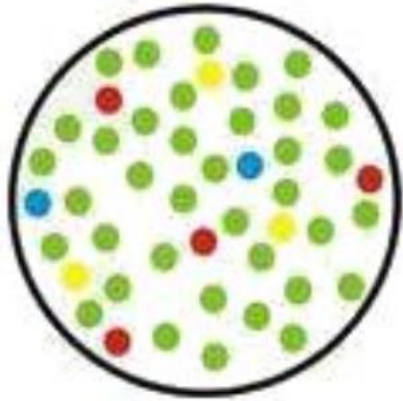


Please, think for few minutes in groups: what essential elements integration entails and what is the difference between integration and inclusion?

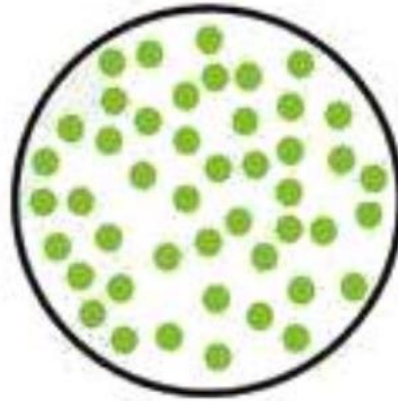


Forms of interactions between minority / majority groups

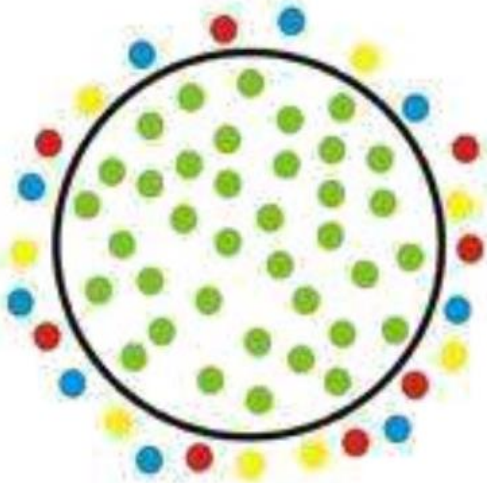




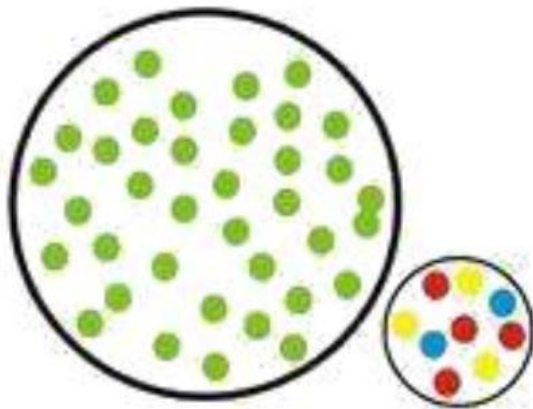
Inclusion



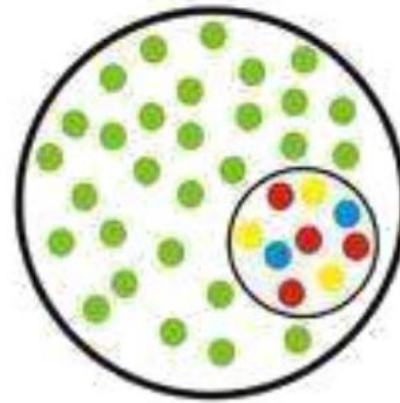
Assimilation



Exclusion



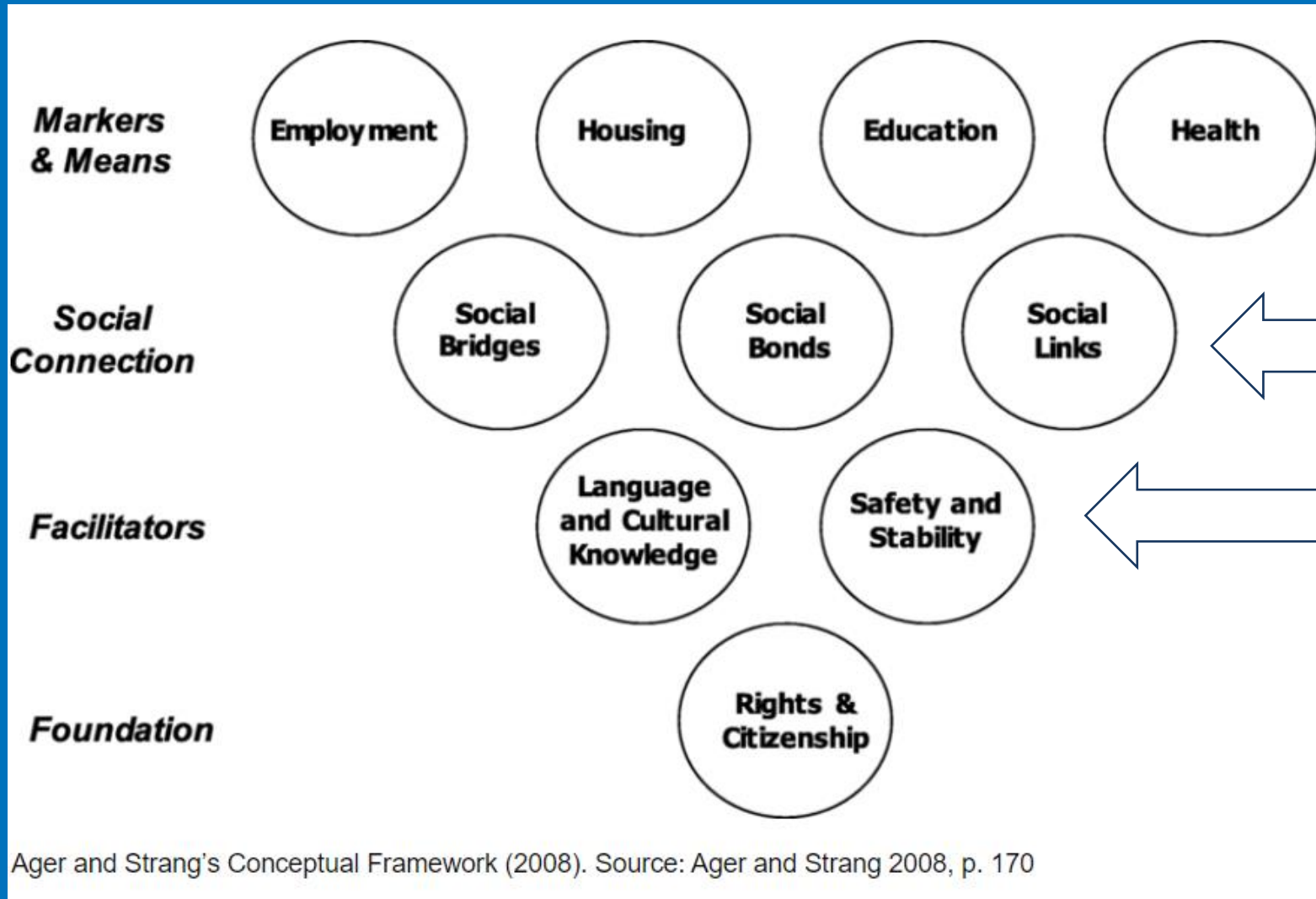
Segregation



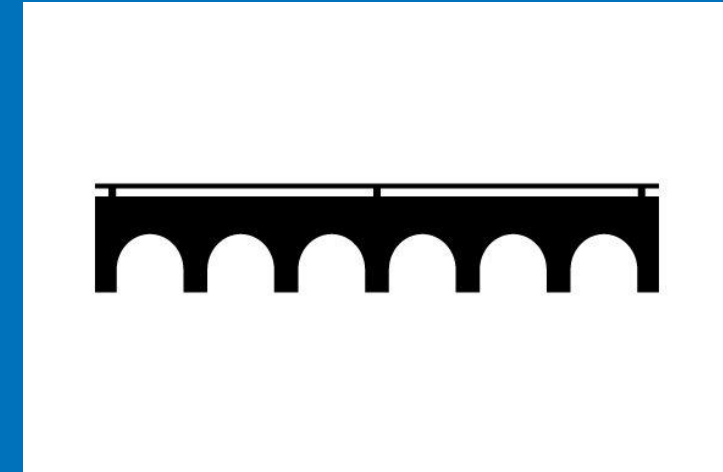
Integration

The evolution
of integration
and beyond ...

Refugee integration policy areas and indicators



Ager and Strang's Conceptual Framework (2008). Source: Ager and Strang 2008, p. 170



Coordination and BRIDGING

Labour market

Partners

Vocational training

Qualification recognition

Social services and allowances

Mental and physical health



Welcoming communities

Housing

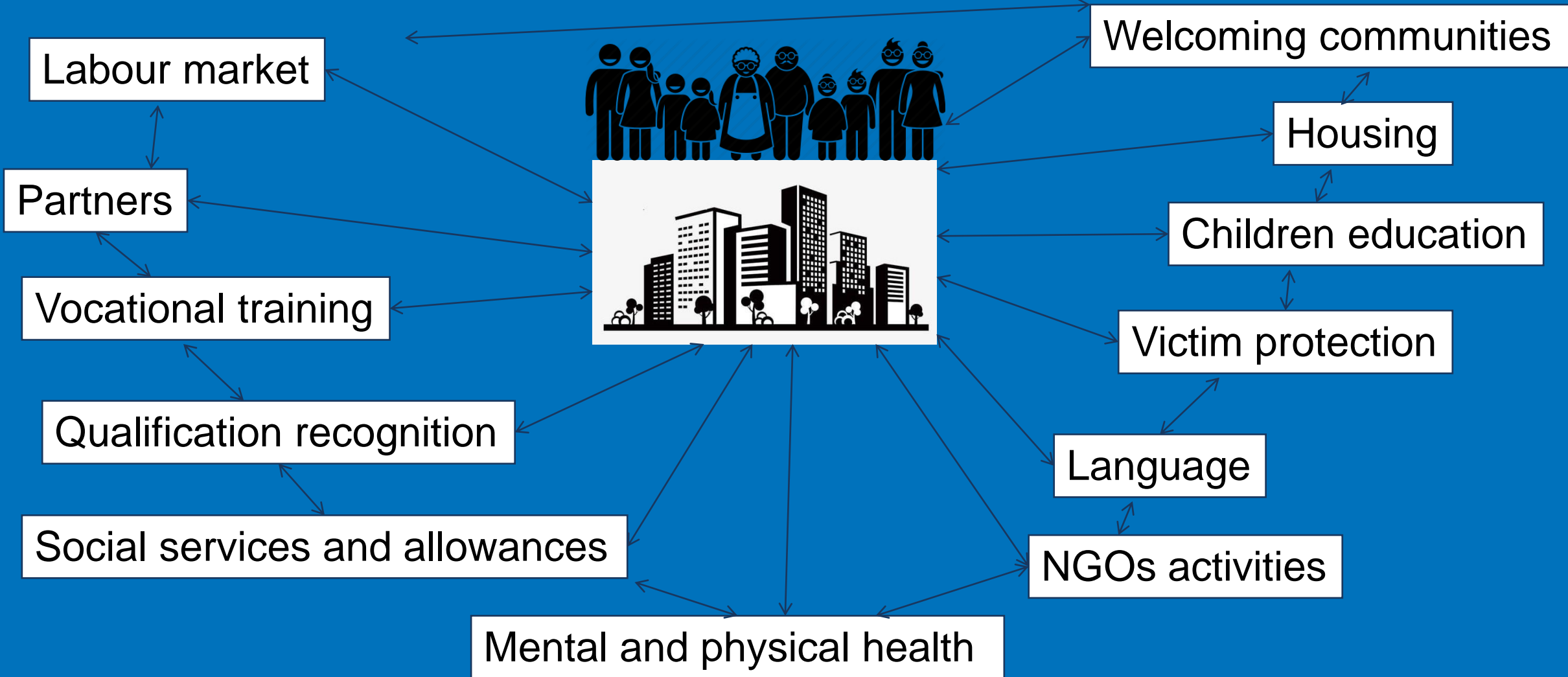
Children education

Victim protection

Language

NGOs activities

Coordination and BRIDGING



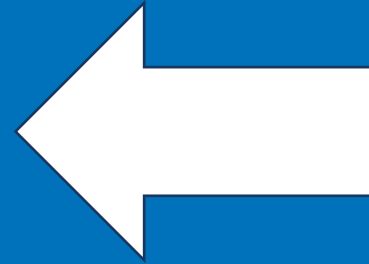


UNHCR
The UN Refugee Agency

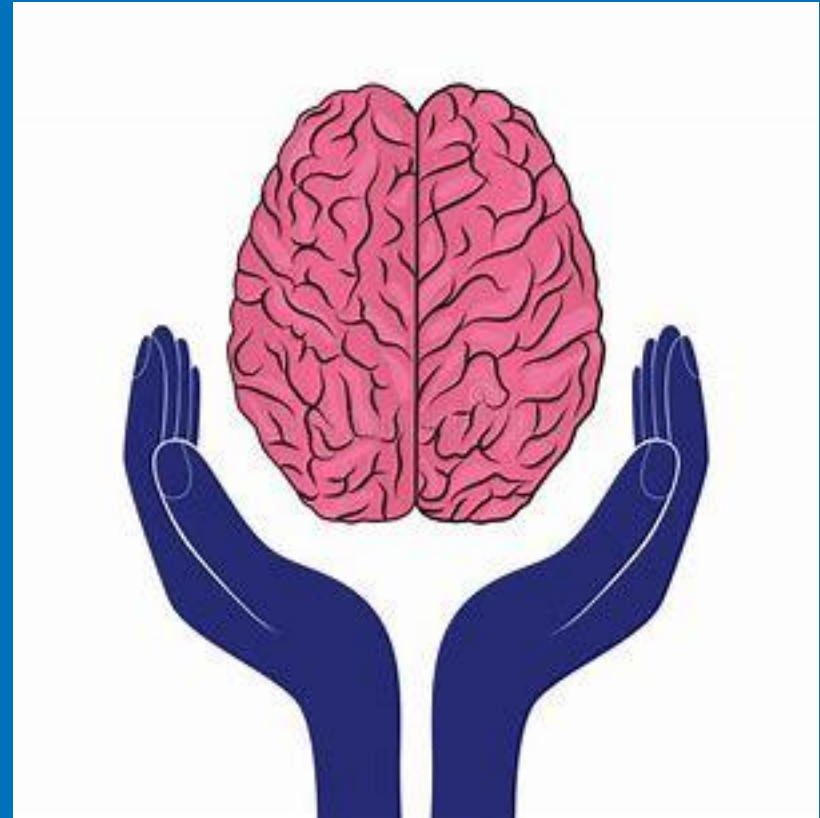
Nordic and Baltic Countries



Dimensions of Belonging



Please, think for few minutes in groups: what is your role in facilitating refugee integration at individual/professional and institutional levels?



UNHCR
The UN Refugee Agency

Nordic and Baltic Countries

Different integration models



Funded by the state
Led, managed, coordinated by municipalities
Supported by NGOs

Funded by the external fin. instruments
Led, manage, coordinated by NGOs
Supported by municipalities



Transition...

Opportunities & challenges

Opportunities & challenges



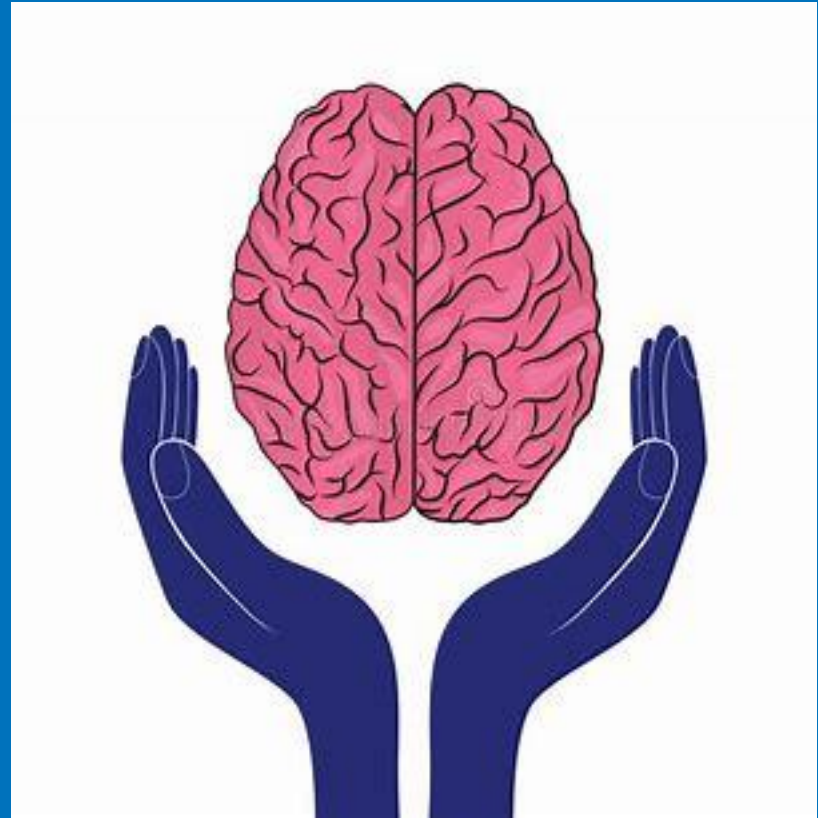
Integration outcome

“Whole of Society” approach
A new/old way of working

EXAMPLE



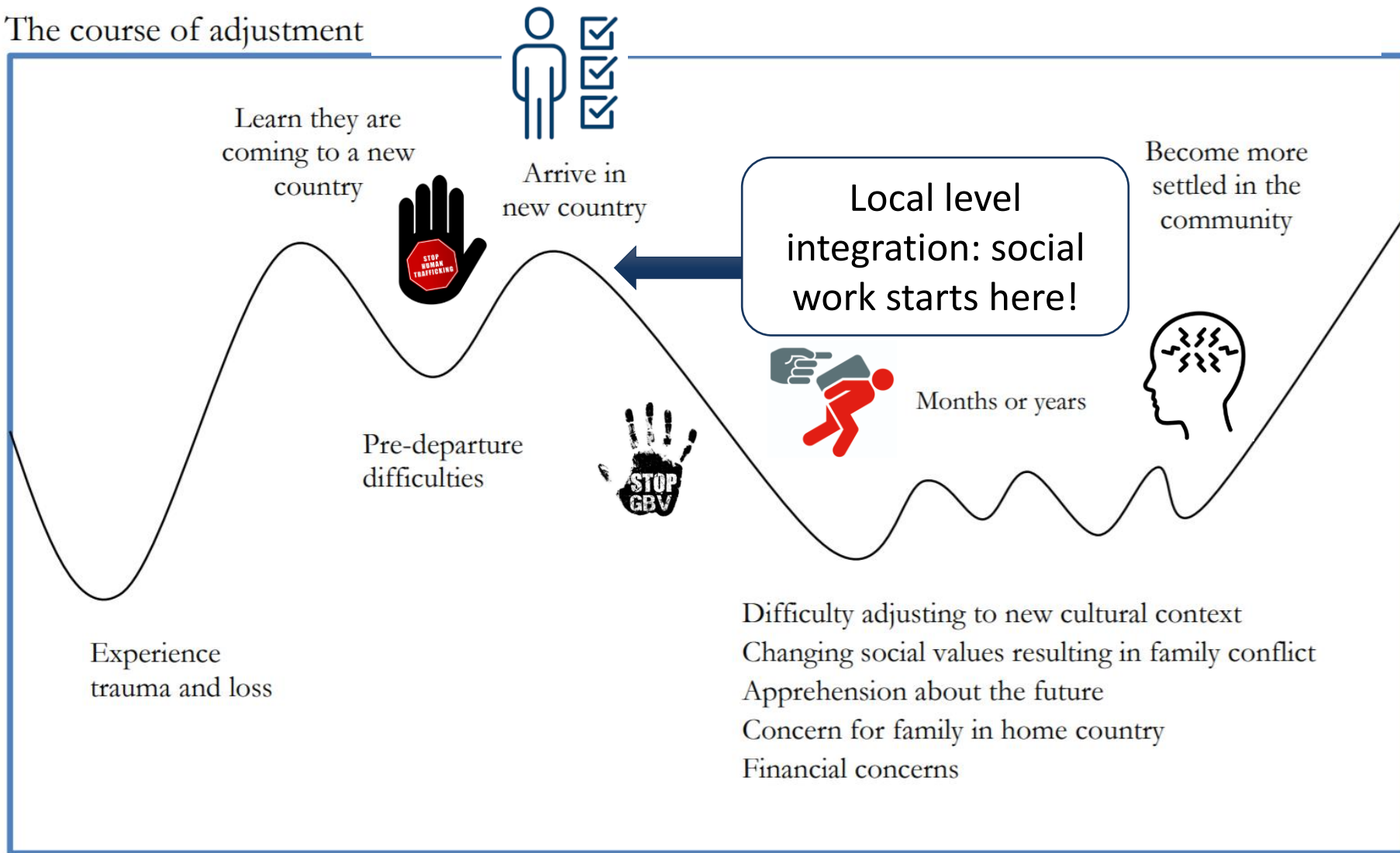
Please, think for few minutes
in groups: when and why
integration interventions are
relevant for refugees to be
well integrated?



UNHCR
The UN Refugee Agency

Nordic and Baltic Countries

The course of adjustment



Arrival and integration pathways: ups and downs



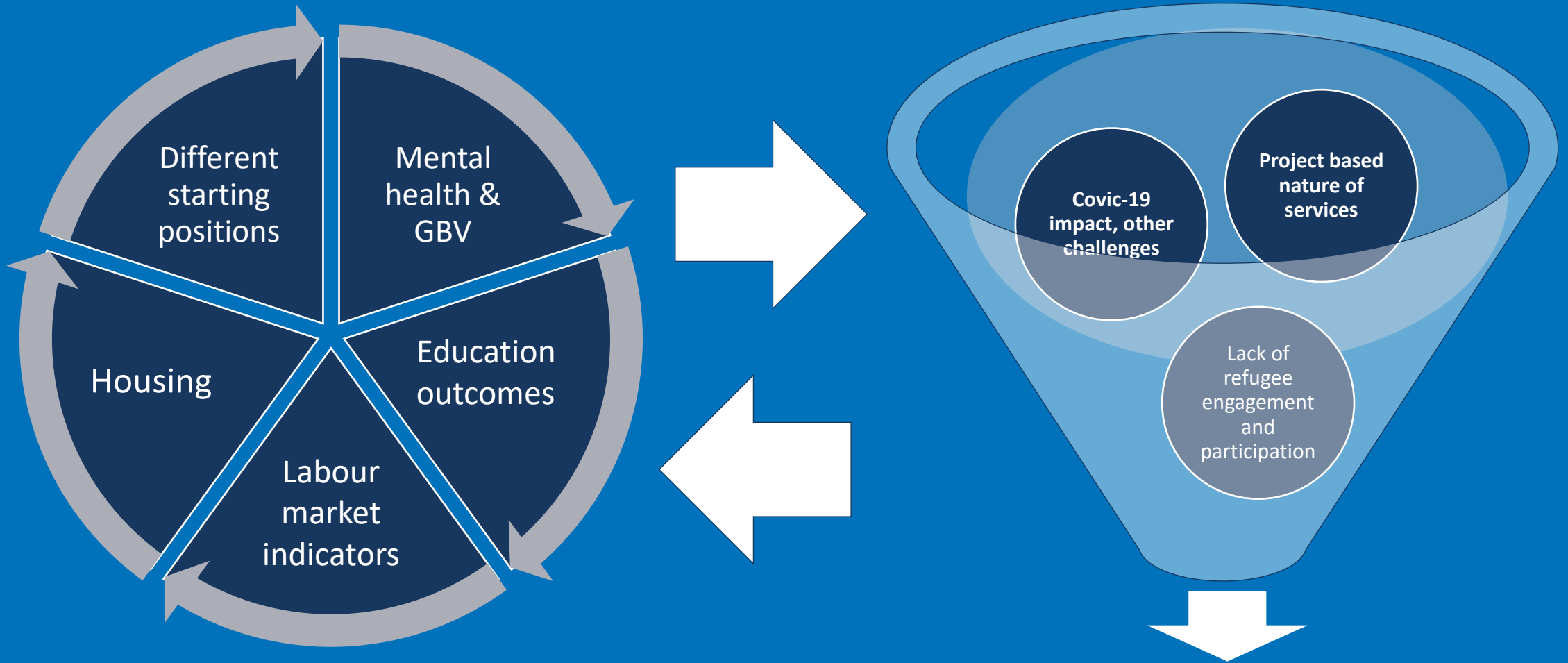
PTSD, GBV, THB



Strategic intervention

Source: Adapted from “Count me in!: A resource to support ESL students with refugee experience in schools,” Minister for Education, Literacy Secretariat, Government of South Australia, 2007.

Key challenges: how to address within the framework of integration work



Integration outcome



UNHCR
The UN Refugee Agency

Nordic and Baltic Countries

Characteristics	Refugees	Immigrants
<i>Motivation</i>	Contextual	High
<i>Reasons</i>	Political pressure	Individual aspirations
<i>Homeland</i>	Forced to leave	Decided to leave
<i>Decision</i>	Involuntary	Voluntary
<i>Departure</i>	Unplanned	Planned
<i>Context</i>	Loss	Hope
<i>Visiting homeland</i>	Impossible	Possible
<i>Control</i>	Losing	Gaining
<i>Time orientation</i>	Past	Future
<i>Social networks</i>	Other expatriates	Locals / relatives
<i>Expectations</i>	Political changes of homeland	Work and “normal life”
<i>Situation control</i>	Control from others	Their own control

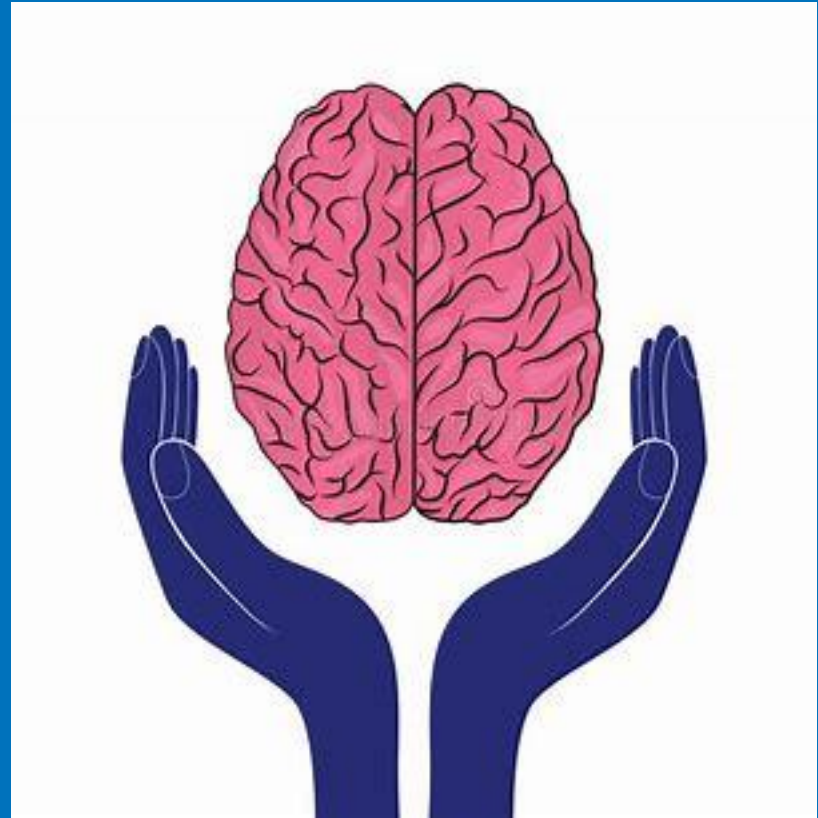
Differences between refugees and immigrants



Implication for integration work



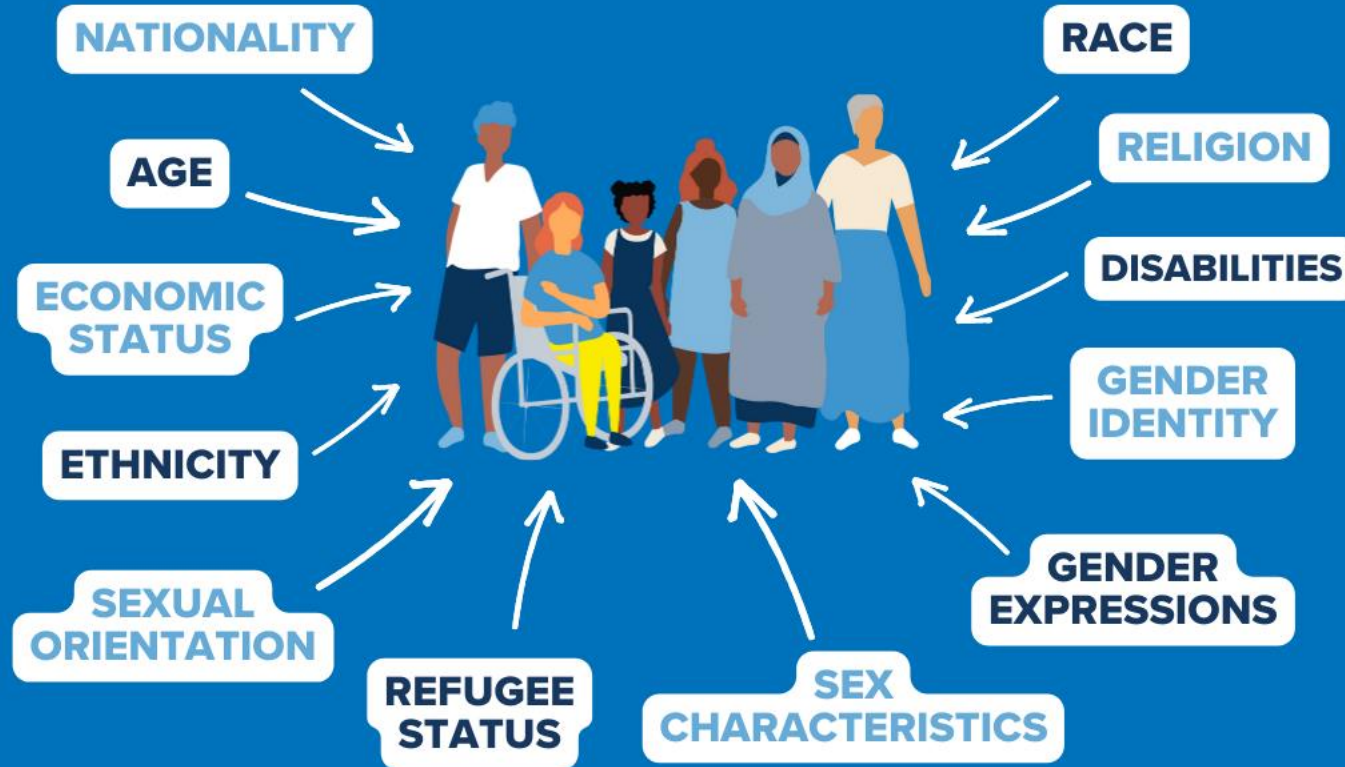
Please, think for few minutes in groups: in your view what is intercultural competences and what essential elements definition of DIVERSITY entails? And why it is important for integration work?



UNHCR
The UN Refugee Agency

Nordic and Baltic Countries

INTERSECTING FORMS OF DISCRIMINATION

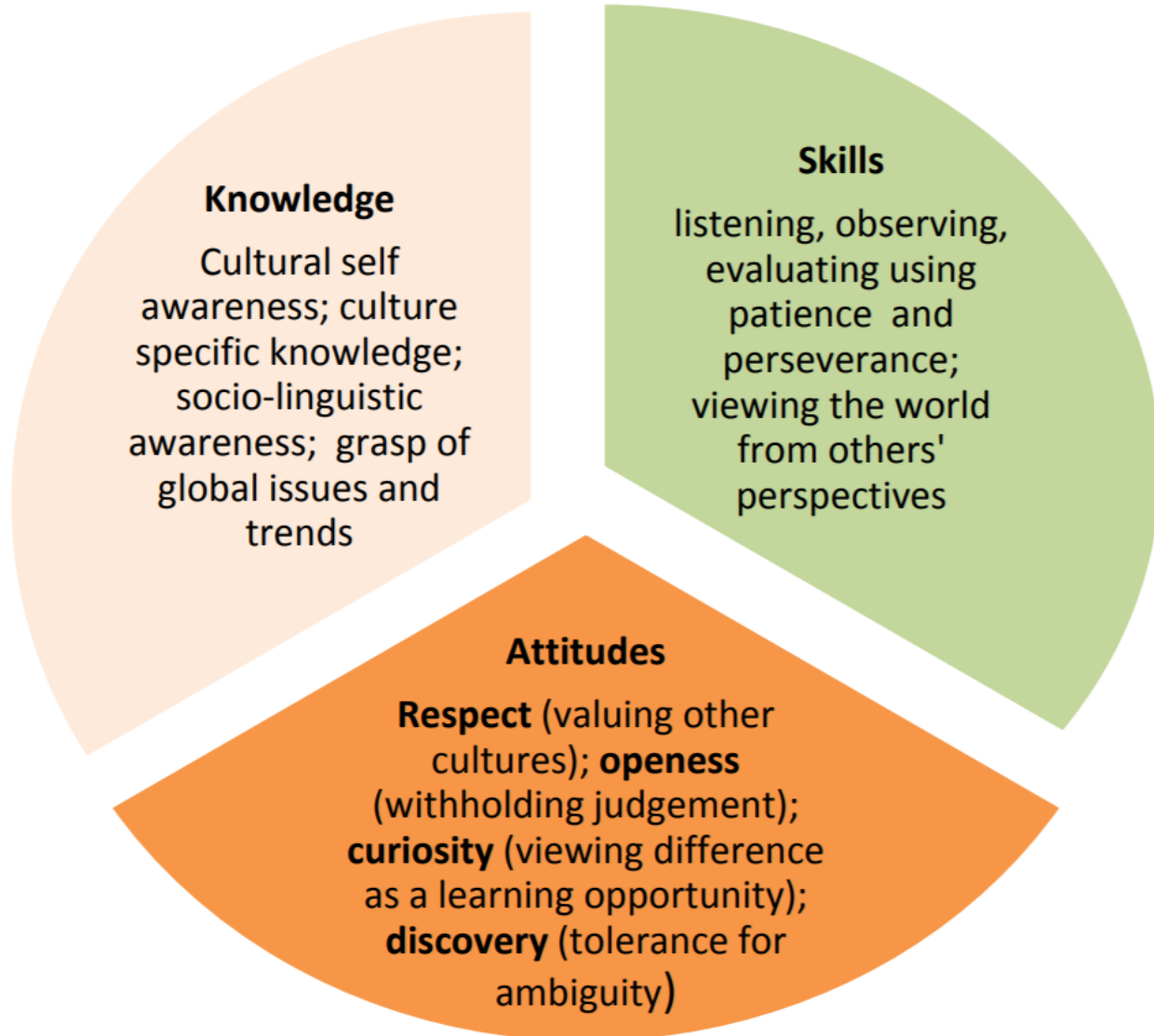


Diversity as an integral part of contemporary societies

Multiple discrimination or multiple advantage...

Constituent elements of intercultural competence

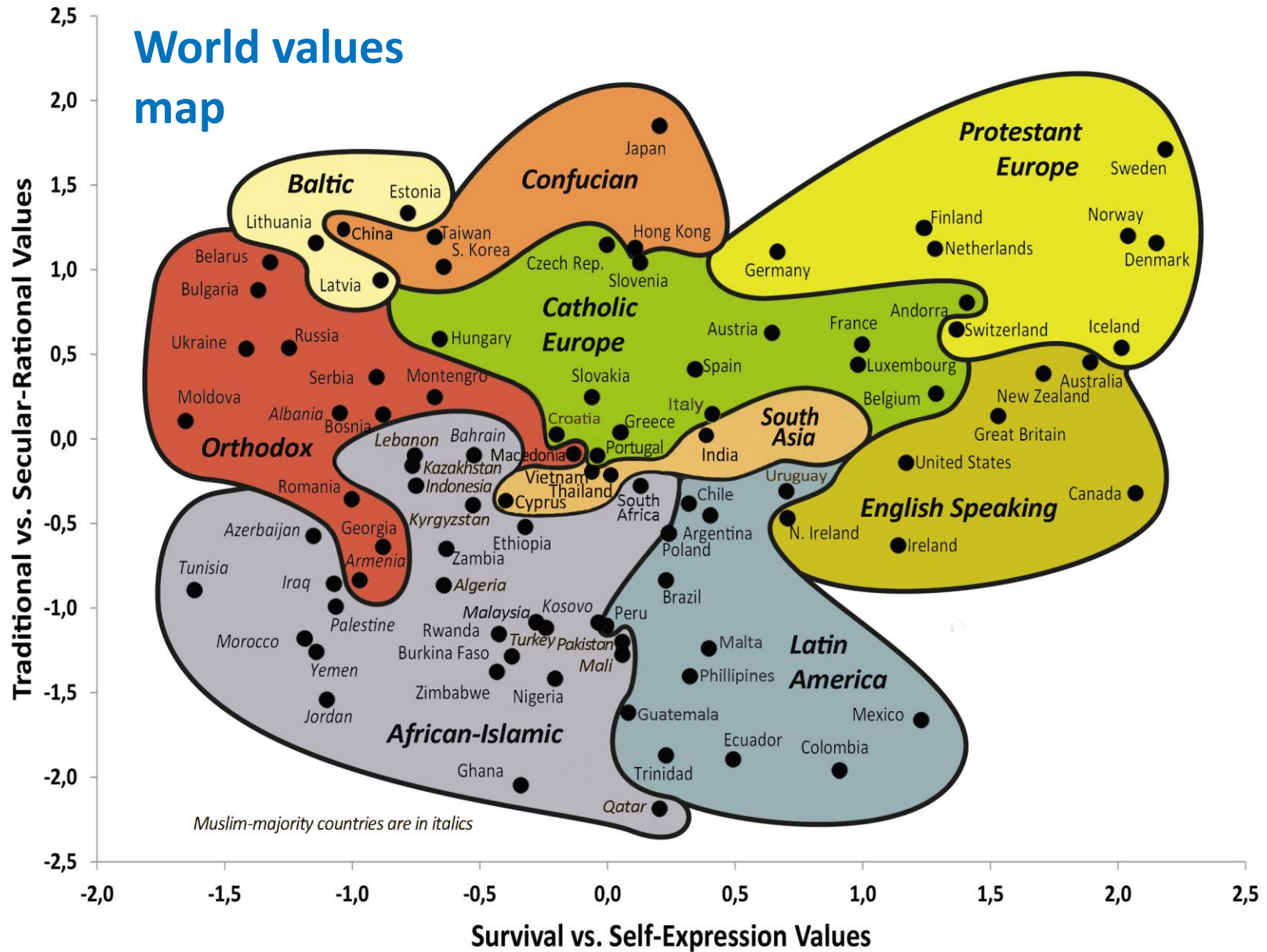
(Adapted from Deardorff, 2006)



What is
intercultural
competences?

Why it is important
working with refugee /
immigrant integration

World values map



What are implications for integration work?

dic and Baltic Countries

Being disabled doesn't define me, what I am, who I am or what I can do...People don't realize how hard we're all trying to rebuild our lives from zero.
*I'd say to them: **Try to get to know us. There's more inside us and inside you than everyone thinks***

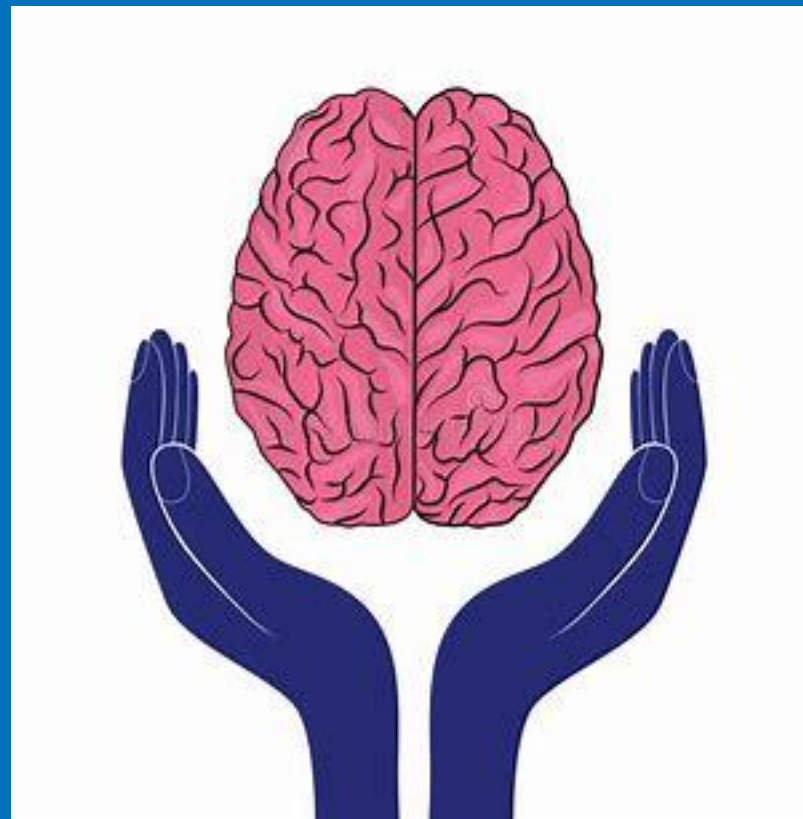
Adolescent Syrian refugee



UNHCR
The UN Refugee Agency

Nordic and Baltic Countries

Please, think for few minutes
in groups: what is participation
and why in is important
working with refugee
integration?



UNHCR
The UN Refugee Agency

Nordic and Baltic Countries

Where is our target groups? THE LEVELS OF PARTICIPATION

Empowering

Final decision making is into the hands of refugees and immigrants to achieve collaborative action

Collaborating

Working in collaborative partnership with refugees and immigrants in all aspects of decision making

Involving

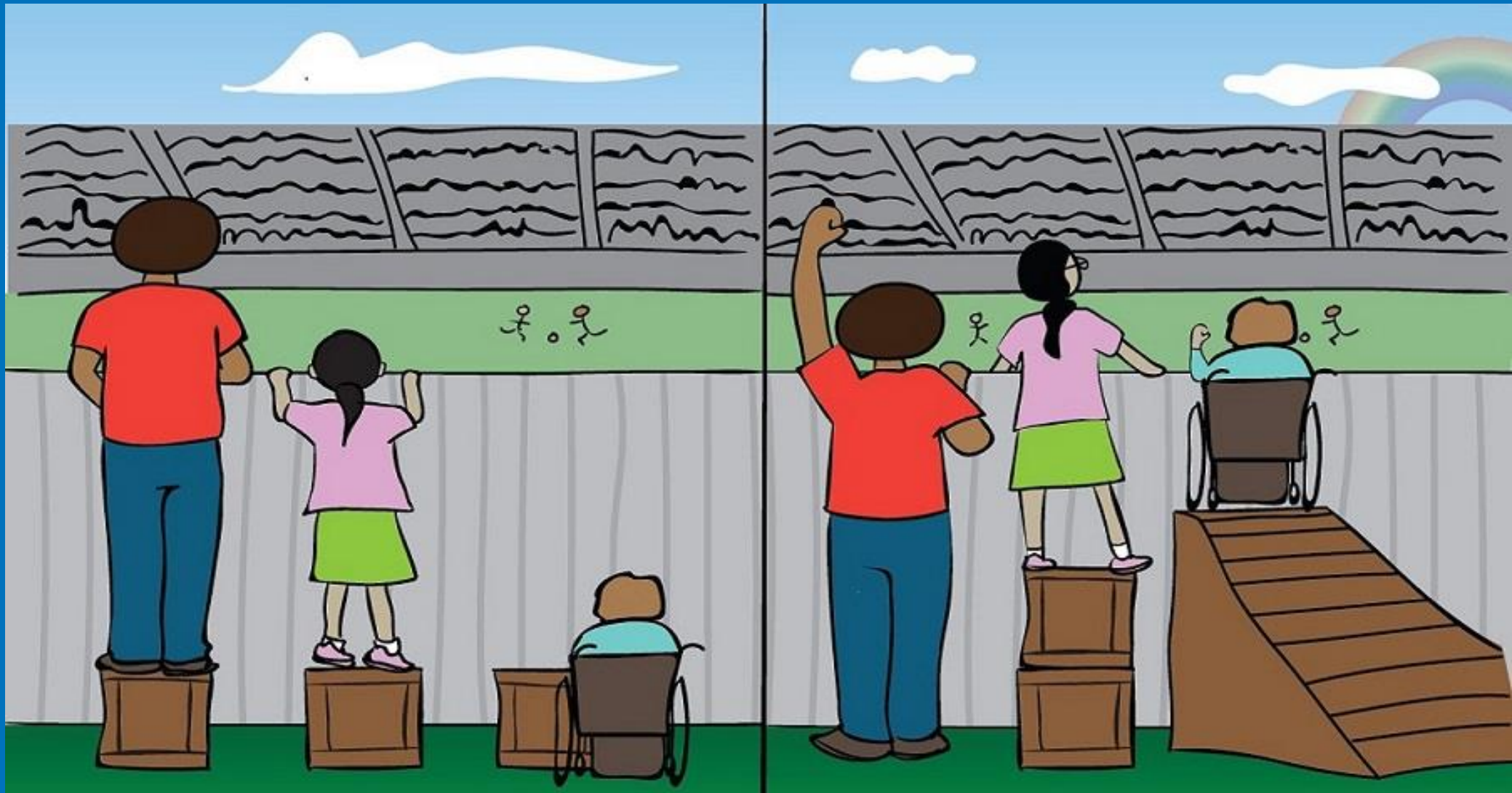
Refugees and immigrants are involved throughout the process to ensure that needs, wishes & concerns are consistently understood & considered

Consulting

Obtaining refugees and immigrants feedback on analysis, alternatives, decisions

Informing

Refugees and immigrants are provided with balanced and objective information



EQUALITY

EQUITY



UNHCR
The UN Refugee Agency

Nordic and Baltic Countries



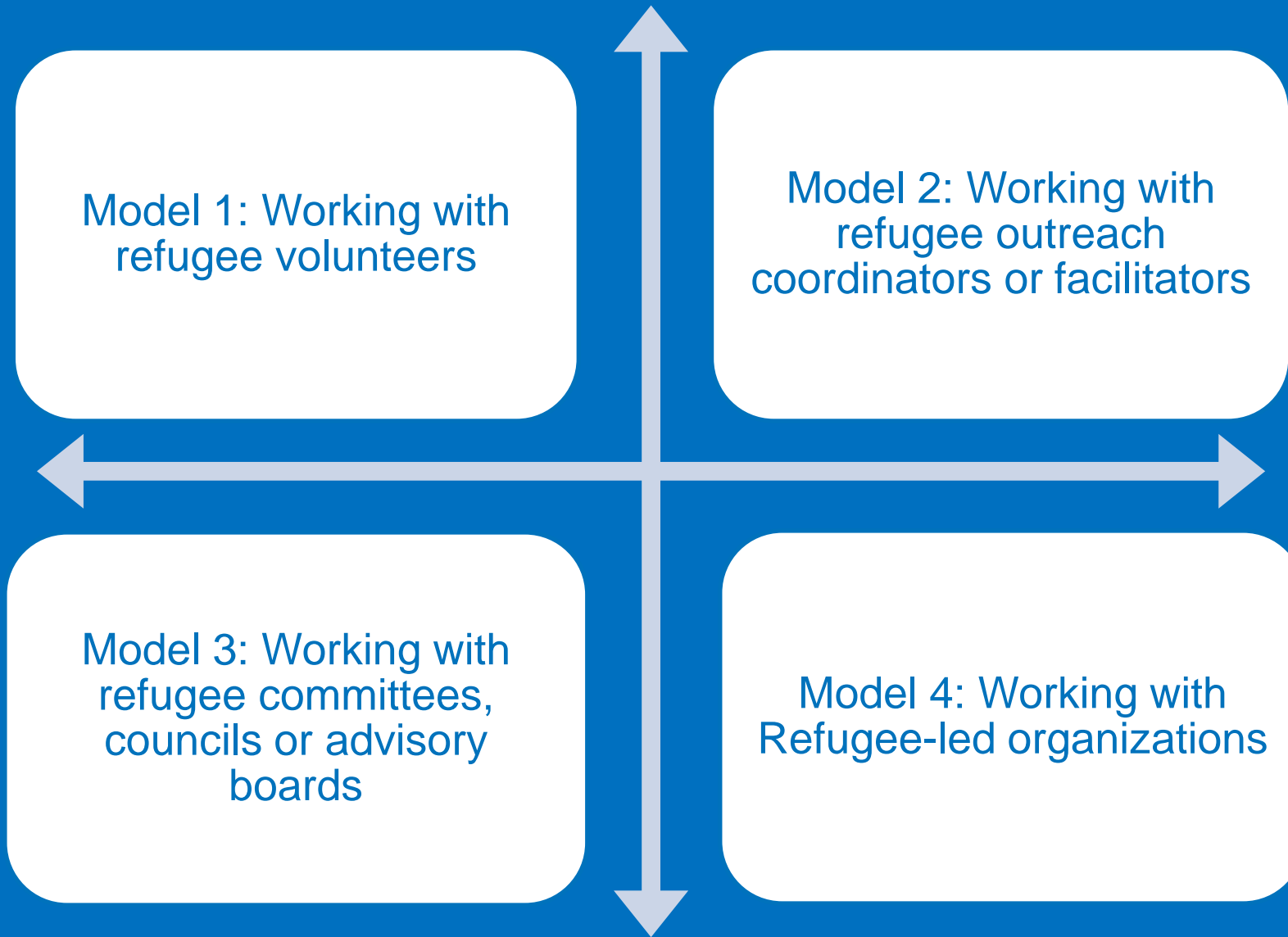
PARTICIPATION



UNHCR
The UN Refugee Agency

Nordic and Baltic Countries

Four key models



Surveys, FGDs, other feedback mechanisms...

Innovative solutions

The list is non-exhaustive

EFFECTIVE INCLUSION OF REFUGEES

PARTICIPATORY
APPROACHES FOR
PRACTITIONERS AT
THE LOCAL LEVEL



<https://www.unhcr.org/what-we-do/reports-and-publications/handbooks-and-toolkits/effective-inclusion-refugees>

Thank you!

#WithRefugees



UNHCR
The UN Refugee Agency

Nordic and Baltic Countries